

RESILIENT EAST Highlights 2020/21

We are preparing the eastern Adelaide region for the impacts of climate change as we experience more heat, less rainfall, and more extreme weather events.

6,670 trees & 62,430 plants

added to our urban streets, parks and creek corridors

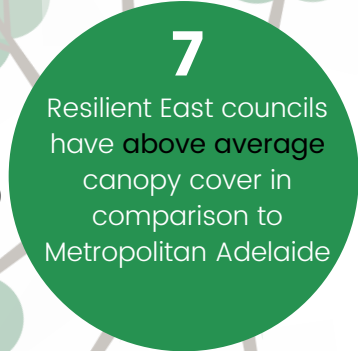


815 trees & 10,000 plants

provided to residents through giveaways and vouchers



of total land area is covered by tree canopy*
*3m above ground, 2018/19



Resilient East councils have above average canopy cover in comparison to Metropolitan Adelaide



Resilient East councils have **discouraged or banned artificial turf on verges**



council programs, events or initiatives support greening on private property

9 Grassroots Grants for community greening and biodiversity projects (Green Adelaide)

245

B-pods

Verge Soakers

785

Street Tree Inlets

54

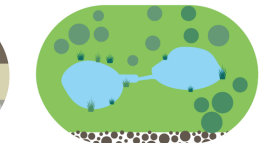
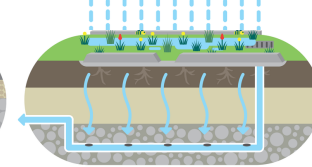
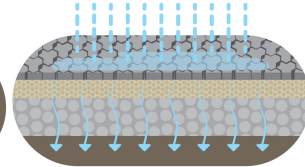
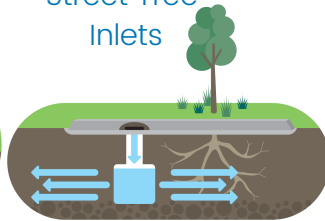
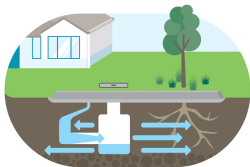
sites with Permeable Paving

88

Raingardens

17

Wetlands



Regional work complete

- ✓ Action Plan 2020-24
- ✓ LiDAR canopy mapping
- ✓ Street Tree Species Guideline
- ✓ Urban Heat Mapping Factsheets
- ✓ Creating More Spaces for Trees

268 staff

across 4 councils participated in climate risk governance surveys



44 Climate Champions



created in April
Followers = **227**
Posts = **18**

- 38** Stories / resources added to website
- 94** Subscribers to our first e-news sent (April)
- 24** Resources created for partners to use and share

resilienteast.com

